

APU220

Standard Features

Designed and built in Australia – for tough mining conditions

Compact modulated design – increases the mounting location options and reduces weight

Purpose built - to compliment csb range of fail safe disc calipers

Tenv electric motor - keeps the dust, dirt and water out and helps extend motor bearing life

Sun cartridge valves - quality and reliability that comes with the best cartridge in the world

Stainless steel tank – for years of corrosion resistant life

10 micron filter - providing a clean and reliable system

Ductile iron manifolds – offering compact circuitry and strength

Submerged robust gear pump – simple to service with spider coupling

Test points – for easy testing and troubleshooting

Australian made - providing you with local support and readily available parts at economical prices

Integral hand pump - provides manual release of calipers

Options

Multiple control options available

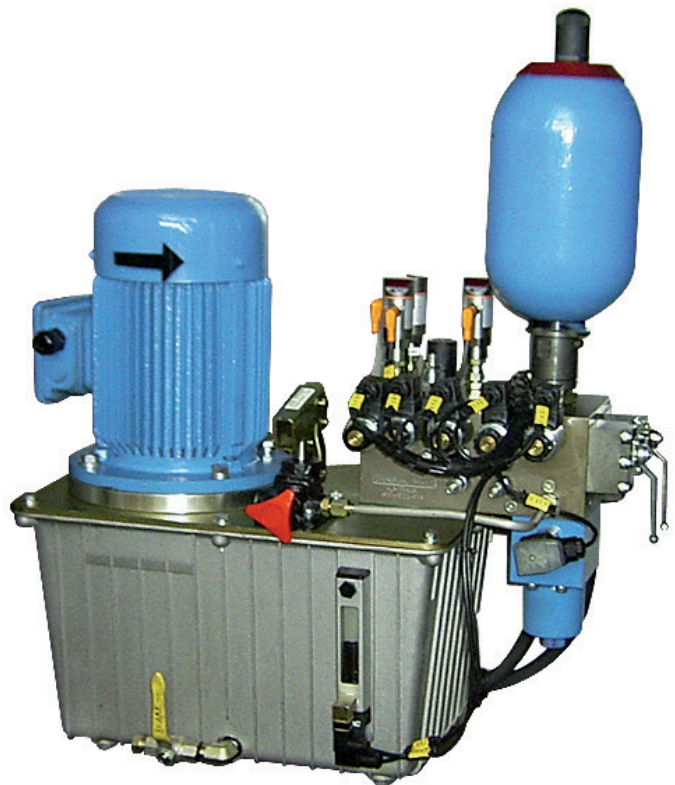
Valve covers to protect and offer tamper resistance

Stainless steel enclosures with optional wiring and rain covers

Remote customer specified pressure switches

Larger volume tanks

Different flow options



Product Overview

Approximate Weight
(Standard unit dry)
130 kg

Control options

- 01. On / Off operation
- 02. Control application, single counter pressure
- 03. Quick lift, accumulator boost, extra DCV's
- 04. Control application, per 02 plus extra cct to full torque
- 05. Control application per 02, plus full redundancy
- 09. Proportional pressure control -closed loop braking

Electric motor

Installed power 2.2 kW
Frame size 100LA
Std supply 415VAC/3ph/50Hz
Current - full load 4.5 Amp
IP rating - standard 55
Material SG Iron

Control voltages

12VDC, 24VDC, 48VDC, 110VDC, 110VAC

Output capacity

Output standard 3.0 L/min (nom)
Output optional 5.0 L/min (nom)

Pressure rating

Bar 210

Pressure switch

Standard - single contact type
Voltage rating VAC10-250 VAC
Current rating 5 Amp
Optional - dual digital
Voltage rating VDC 24 or 48
Current rating 250 m Amp

Tank size

Standard 25 L - Aluminium
Optional 50 L - Stainless Steel

Oil filter

Standard - 10 um
Optional - 10 um Duplex

Air filter

Standard - 5 um screw / spin on
Optional - 3um spin on
Optional - expansion chamber (sealed system)

Approximate Dimensions (Standard unit)

	25L	50L
Width	670	850
Depth	400	400
Height	700	750

APU

X	X
---	---

 /

X

 -

X	X
---	---

 -

X	X
---	---

 -

X	X
---	---

	Size	
0.37 KW, 0.5cc / rev pump std	37	
0.75 KW, 1cc / rev pump std	75	
2.2 KW, 3.3cc / rev pump std	220	
(negate for APU 47 & 75)		
Compact (same control manifold as APU 37 & 75)	C	
Standard (mutli option control manifold incl hand pump)	S	
Control Option		
On / off operation	01	
Control application, single back pressure setting	02	
Quicklift, accumulator boost, extra DCV's	03	
Control application, per 02 plus extra dump to full torque	04	
Control application per 02, plus redundancy (or control start)	05	
Proportional pressure control, c/w 2 x hyd cct + oil level sw	09	
Motor Voltage		
Motor 415 V AC three phase 50Hz 4 pole	2	
Motor 1000 V AC three phase 50Hz 2 pole	7	
Solenoid coil voltage		
Control voltage 24 V DC	4	
Control voltage 48 V DC	5	
Options Code		
Option number allocated for each power unit variation	XXX	